

SPRING 2020

# DOWRY OF MARY



---

**SUPPORT DOCUMENT  
FOR SCHOOLS**

---

# CONTENTS

**INCLUDED IN THESE PAGES ARE SOME SIMPLE IDEAS FOR USE WITH PUPILS. SCHOOLS NEED ONLY CHOOSE ONE OR TWO TO DO MEANINGFULLY.**

<b>PAGE 2:</b>	<b>Contents</b>
<b>PAGE 3:</b>	<b>Aims and Overview</b>
<b>PAGE 4-5:</b>	<b>Letter from the Cardinal</b>
<b>PAGE 6:</b>	<b>Re-dedication</b>
<b>PAGE 7-10:</b>	<b>Q and A for schools</b>
<b>PAGE 11-12:</b>	<b>Angelus</b>
<b>PAGE 13:</b>	<b>The Annunciation</b>
<b>PAGE 14-5:</b>	<b>The Dowry of Mary - A History</b>
<b>PAGE 16:</b>	<b>The Holy House</b>
<b>PAGE 17:</b>	<b>Prayer and Worship</b>
<b>PAGE 18:</b>	<b>A Hymn for Our Lady of Walsingham</b>
<b>PAGE 19:</b>	<b>Local/National Church</b>
<b>PAGE 20:</b>	<b>Creative Home-School Links</b>
<b>PAGE 21:</b>	<b>Dowry Pilgrimage</b>
<b>PAGE 22-3:</b>	<b>Official Resources &amp; Useful Links</b>
<b>PAGE 24:</b>	<b>Preparation Sheet</b>

---

# AIMS AND OVERVIEW



**Welcome and thank you** for responding to the invitation and reading this document. The aim of these materials is to share the meaning of the Re-dedication of England as the Dowry of Mary and the message of Our Lady of Walsingham.

We know that schools are extremely busy so you are not expected to do extra work; on the contrary, it is hoped that these support materials will simply enhance your Lenten experience as well as The Year of the Word and prayer life in general. The work has already been done for all you. You may use as much or as little of the materials as you would like.

The Re-dedication will take place in parishes on **29th March**. The main purpose of this is to follow Mary's openness to God's call and to say a faith-filled 'yes'. It is a time when we can pray together for our nation and make a real difference.

You are invited to do something to mark this momentous occasion on **30th March** or this Lent (or even this year) however simple it may be. It is hoped that it will be meaningful and lasting with your pupils so that they may grow in relationship with Christ and his Blessed Mother for, as St Pope John Paul II said: '[Mary is the sure path to our meeting with Christ](#)'.  
**May God bless you on your journey.**

---

# A LETTER FROM THE CARDINAL

## PASTORAL LETTER FOR THE SIXTH SUNDAY IN ORDINARY TIME, 16TH FEBRUARY 2020 (PART 1)

**The prayer of our** Mass today expresses the desire of our faith: that God's grace will create in us 'hearts that are true and just' which can be 'a dwelling pleasing to you.' We pray that our way of life will be marked by an unaffected truthfulness and a lasting sense of justice. We pray, too, that we may be comforted, in all circumstances, by an enduring sense of God's presence. Soon we will be entering the season of Lent, a time when we seek spiritual renewal in our lives.

Step by step we will look into ourselves and pinpoint the ways in which we are neither truthful nor just, and the ways in which we close our hearts to the promptings of God.

Today's Gospel already points to some aspects of that self-examination: no place for anger, for self-indulgence and betrayal, especially within sexual intimacy and the commitments we have given. Rather, we seek wisdom and find happiness in following God's law. This is our project.

A few days ago, I was privileged to meet Pope Francis. At my request, he blessed a new icon dedicated to Our Lady of Walsingham. He did so because he knows that during this Lent, on 29th March, all are invited to make a personal Act of Dedication of our country to Our Blessed Lady. In doing so we repeat the dedication made in 1381 by Richard II of England who promised this land and its people as the Dowry of Mary.

There is much for us to learn about being the Dowry of Mary and the love which is expressed in that title. It is rich in history even if not contemporary in language. I hope we can use these coming weeks to deepen our knowledge of this ancient and lovely devotion.

This fits well into our Lenten journey. Mary will always lead us to her Son. She will take us to him so that he can show us his love and mercy. There are two special occasions during which we can invite Mary to lead our Lenten journey.

---

# A LETTER FROM THE CARDINAL

## PASTORAL LETTER FOR THE SIXTH SUNDAY IN ORDINARY TIME, 16TH FEBRUARY 2020 (PART 2)

The first is the three-day period from 19th to 22nd March when the Statue of Our Lady of Walsingham will come to Westminster Cathedral. There will be three days of devotion and renewal. Please do come if you can.

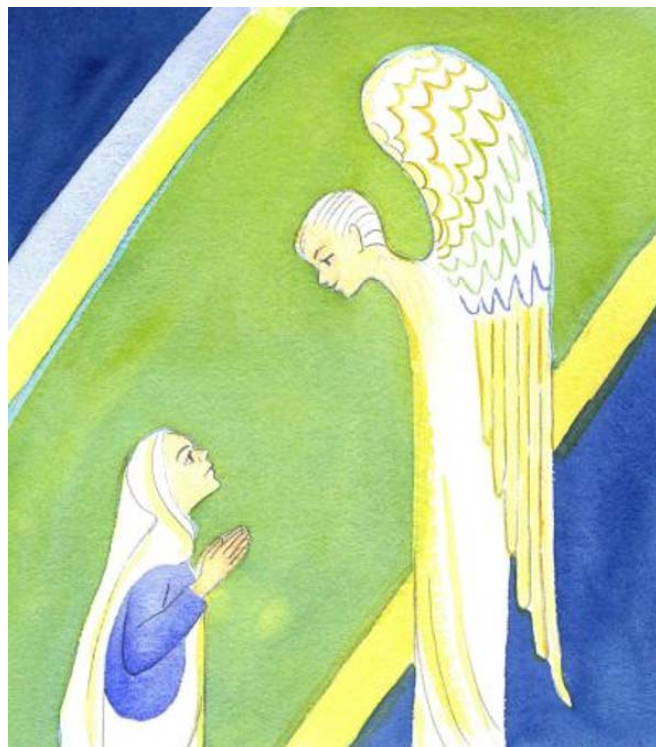
The second occasion is the three days from 26th to 28th March, leading up to the National Day of Re-dedication on 29th March. I hope that all of us can observe these days of prayer, asking Mary to embrace this country of ours, to instil in us a truthfulness and a love of justice, so that we may experience, as she herself did, the joy of the Lord's presence.

We all know well the title of Mary as our 'sorrowful Mother'. We turn to her in our sorrows. Yet there is another tribute to her, even more deeply rooted in our tradition. It is that of the Joys of Mary. These Joys, often numbered as seven, include the coming of the Angel Gabriel to Mary at the Annunciation and the wondrous birth of her Son, our Blessed Saviour and her glorious entry into the happiness of heaven. We share in them for they are the great joy of our faith.

Indeed, we are called to be heralds of this joy in a world often in need of joyfulness. May Mary help us to know and share her joy as we live and proclaim our faith. May God bless us and guide us throughout this coming Lent.

Yours devotedly,  
**Cardinal Vincent Nichols**

(Archbishop of Westminster)



---

# RE-DEDICATION

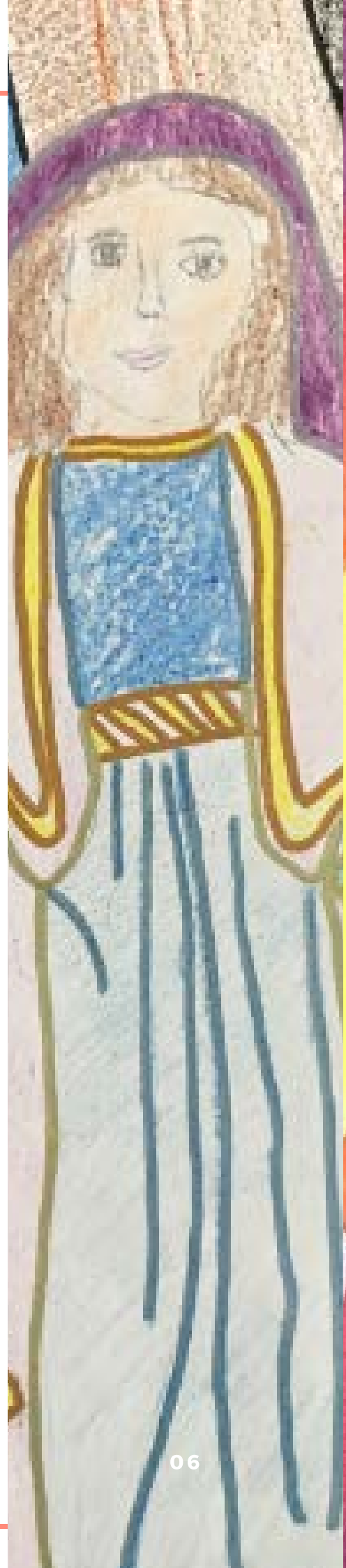
**A TIME OF PERSONAL PROMISE TO SAY 'YES' LIKE MARY AND A TIME OF COMMUNAL PRAYER FOR OUR NATION**

**March 2020** is a historic month for the Catholic Church in England as there will be a Re-dedication of England as the 'Dowry of Mary'. The first dedication was made by Richard II in Westminster Abbey in 1381 as he sought protection in the face of great political turmoil. At this point, England received the title of Mary's dowry meaning that England was 'set aside' as a gift, a dowry, for Our Lady under her protection and guidance.

The Re-dedication, which has been encouraged by the Cardinal in his pastoral letter to all parishes, will take place throughout the country on **29th March** 2020. As Richard II once gave England as a gift to Our Lady for her guidance, so do we too seek Mary's protection and prayers, giving ourselves through this act of dedication. Schools can respond to the invitation to engage in this Re-dedication in a number of ways, even if it is in a very simple but meaningful way so that as many people as possible will take part throughout the country.

History shows us that when we (God's people) pray a surrender to God's will for their lives, society is transformed. By taking up this wonderful opportunity of dedication, our pupils can be part of the renewal of the nation. This will bring all of us closer to the will of God through Mary. This season of **Lent** and the **Feast of the Annunciation** (which is celebrated on 25th March) are ideal times to share the message and pray with our school and parish community.

---



---

# Q AND A FOR SCHOOLS



## **What is the Re-dedication and how is it relevant to primary and secondary schools?**

The Re-dedication is both a personal promise of the people of our country, and a renewal of the entrustment vows made by King Richard II in 1381 when he promised this land and the people as the dowry of Mary. On this day we accept God's gift of His Mother, the cause of our joy, as she leads us to Christ through her example as the First Disciple and she invited us to "Do whatever he tells you." (John 2:5). The Re-dedication will take place in all parishes in England on 29th March. All schools throughout the country are invited to pray and reinforce this message in some way (ideally on 30th March) and pray with pupils.

## **What is the 'Dowry of Mary' and how does this link to Our Lady of Walsingham?**

Our Lady of Walsingham is England's Protectress. In the olden days, one of the great titles of England was the 'Dowry of Mary' and England is the only country in the world to have this privileged title. England truly belongs to Our Blessed Lady and the mission of Our Lady of Walsingham is to bring the people of England back to Christ. The story of Walsingham began in 1061 AD during the reign of St Edward the Confessor, King of England... (This story is included in more detail later in the document and is child-friendly). In short, Walsingham is England's Nazareth because Our Lady asked Richeldis (a pious widow) to build a Holy House in honour of the first of her JOYS – the Annunciation – that she would become the mother of God's Son. As Mary said YES to God, so we are called to do the will of God in our lives. We pray with Mary... 'Let it be done unto me according to thy word.'

---

# Q AND A FOR SCHOOLS

## What is the Dowry Pilgrimage and how does this involve schools?

There are Marian shrines all over the country (and the world) but the one in Walsingham is the most popular and important shrine in England. This shrine (the 'Holy House') has toured every Catholic Cathedral in England for the past two years and will be visiting Westminster Cathedral for a Triduum of prayer from 19th-22nd March to end the tour. All diocesan schools are invited to attend the Cathedral on the afternoon of Friday 20th March between 12:30pm and 3-4pm. This will include Mass, a brief talk for pupils, a visit to the Holy House, some personal prayer and a quiz. Pupils will also get to see Westminster Cathedral's own shrine to Our Lady of Walsingham in the Chapel of St George and the English Martyrs. Schools are welcome to visit for all of the afternoon or part of it.

## What is happening nationally for the Re-dedication?

As well as the Dowry Pilgrimage, there are a number of events taking place to prepare for the Re-dedication. Pupils may wish to use the sheet at the back of the Support Document to help them to get ready spiritually for the event. They could even complete this at home. Special dates are included in the accompanying PowerPoint. In classes, teachers could discuss these events with pupils who may even mention them in the Acts of Worships they prepare. Those involved with Pupil Chaplaincy in the school may be able to help with setting up for prayer or liturgy on the Feast of the Annunciation; they may also have ideas and initiatives they wish to share with the school on 30th March. Please note that if this is not a suitable time for your school to take part in a meaningful Re-dedication, this may be done at another time instead.



---

# Q AND A FOR SCHOOLS

## What exactly is expected of schools?

All schools are invited to take part in prayer on 30th March to mark the Re-dedication. They are also welcome to pray in preparation for this day and to learn about more about Our Lady and this historic event. There are two main ways in which believers can be involved:

1. **Saying the Angelus (a personal promise)**
2. **Saying the Act of Entrustment (a communal prayer)**

However, the prayer must be done in an age-appropriate and meaningful way for pupils. For this reason, various practical ideas have been offered to support with this and can be found later in the document. For example, younger pupils may say part of the Hail Mary instead of the whole Angelus whilst the older pupils could organise a liturgy for the Act of Entrustment. If pupils are to be introduced to the Angelus, they need to know what it means and its significance. Various links to useful materials are included in this document whilst the Angelus (the original as well as a child-friendly version) are included in the PowerPoint along with some background information.

## Schools are already very busy so how can we fit this in with everything else that is going on?

The work that is done in our schools is truly valued and we thank all those involved in developing the faith-life of our pupils. It is appreciated that schools are extremely busy and have little time to fit anything else in their already-filled timetables. For this reason, all of these materials have been created to minimise work for schools and maximise the impact. The PowerPoint and Angelus can be delivered during whole school assemblies and pupil-led Acts of Worship which are already timetabled. No extra time is required. In fact, most of the work has already been done so that this should hopefully save teachers time. The ideas and resources included should help to develop skills and religious vocabulary as well as make learning about the Red-dedication and prayer time enjoyable and memorable. The home-school links can save teachers time planning and marking homework and involve parents in the process.

---

# Q AND A FOR SCHOOLS

## What are the special dates/events?

- **21st Feb:** Start of 33 days of personal consecration to Jesus through Mary
- **18th March:** Statue of Our Lady of Walsingham will go to Parliament for Mass and the Rosary. We pray for wisdom for law-makers in the UK at this time
- **19th-22nd:** Statue of Our Lady of Walsingham is in Westminster Cathedral for the Dowry Pilgrimage. Schools are invited to attend on the afternoon of 20th March.
- **25th March:** Feast of the Annunciation
- **26th-28th March:** Triduum (3 days) of prayer focused on Eucharistic devotion
- **29th March:** Rededication of England as Mary's dowry (parishes)
- **30th March:** Re-dedication of England as Mary's dowry (schools)

## What support is available?

A PowerPoint with assemblies and worship have been created for both primary and secondary schools; it is hoped that schools will share these in a relevant and engaging way with pupils. This Dowry Support Document offers information, ideas and links that can support both staff and pupils at this time, where appropriate. Although it has been designed for the Re-dedication, there are a number of materials that can be used generally throughout the year to enhance the Catholic Life and prayer. Diocesan Advisers are available to discuss this at deanery meetings and on school visits and are always happy to help with any queries. Parish clergy or chaplains may also be able to support with this time of prayer and a number of them may even be hosting an event in their local church. For those who would like guidance for personal prayer and reflection during the time of preparation, this FREE booklet is available: '33 Days to Morning Glory: A Do-It-Yourself Retreat in Preparation for the Marian Consecration' by Michael E. Gaitley. We share Cardinal Nichols' ***'hope that all of us can observe these days of prayer, asking Mary to embrace this country of ours, to instil in us a truthfulness and a love of justice, so that we may experience, as she herself did, the joy of the Lord's presence.'***



# THE ANGELUS (1)

## 10 ENGAGING WAYS TO INTRODUCE THE ANGELUS TO PUPILS

*We can respond to the invitation to dedicate ourselves to god by saying the Angelus. In doing so, we follow Mary's openness to God's call. Through our faith-filled 'yes', God will indeed work wonders...*

1. Say the Angelus (or Hail Mary with younger pupils) together as a class, school or community.
2. Learn some parts of this prayer and the responses by heart. Say it with your family.
3. Create a PowerPoint on the Angelus/Hail Mary that can be used by groups in the school. Add appropriate images or symbols.
4. Create a glossary of the words used in the Angelus/Hail Mary to help younger pupils.
5. Research different images of the Annunciation and then design an image poster using your favourite words from this prayer.
6. Compose a song/hymn based on the words of this song. An example is given on p20.
7. Reflect on the image by Jean-Francois Millet which depicts two peasants praying the Angelus prayer in the evening. Design your own image and/or explain the importance of this prayer.
8. Create an Angelus prayer card that can be used during Lent or for the Re-dedication, the month of May etc.
9. Create a poster or collage on (parts of) the Angelus and say it with (a member of) your family. Look at work by Elizabeth Wang for inspiration.
10. Research other Marian prayers including the Regina Caeli and then say your favourite one.



# THE ANGELUS (2)

## DEVELOPING RE SKILLS USING THE ANGELUS AS A STIMULUS

### Engagement/Response

- I wonder... what this part of the prayer means
- I wonder... why the church has chosen to say this prayer every day around the world
- I wonder... which part of the prayer you like best
- I wonder... which part of the prayer your partner prefers
- I wonder... which part of the prayer is the most important
- I wonder... why it is said at noon and 6pm and if it can be said at other times instead
- I wonder... why it is not said on Good Friday and Holy Saturday
- I wonder... why the Regina Caeli is said during Easter instead
- I wonder... why bells can be rung during the prayer

### Evaluation

- The Angelus is an old prayer and has no relevance today. Do you agree or disagree? Explain.
- Which image do you think best suits the Angelus? Why?
- Images or statues of Mary can distract us from worshipping God. Do you agree or disagree? Explain.
- What do you think is the most important Marian feast/prayer/shrine? Explain giving reasons.
- The Angelus is suitable for Advent but not Lent. Discuss.
- Prayers like the Angelus must be learnt by heart. Do you agree or disagree?

---

# THE ANNUNCIATION

## THE ANNUNCIATION: A CHILD WILL BE BORN

### Adapted from Luke 1:26-38

In the city of Nazareth, in Galilee, there lived a young woman named Mary. Mary was soon to marry a carpenter named Joseph.

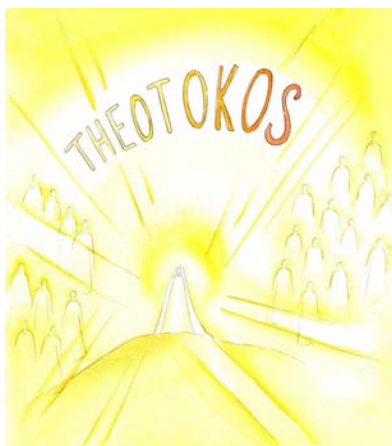
One day Gabriel, an angel visited Mary and said: 'Greetings, most favoured one, and do not be afraid. God has chosen you among all women. Very soon you will have a baby, you must call him Jesus.' This would be a very special baby. He would be great and his kingdom would last forever and ever. He told her that her child would be called the Son of God.

Mary bowed before the angel Gabriel and told him that she would be obedient to God and that she wanted to do as God wished. When she got up the angel had gone.



For other Annunciation artwork try:

[Mother Mary by Andrew White](#)  
[The Annunciation by Antonia Rolls](#)  
[Annunciation by Henry Tanner](#)  
[Annunciation by Fra Angelico](#)  
[Annunciation by William Brassey Hole](#)  
[Annunciation Art by Patricia Brintle](#)  
[The Annunciation by Maurice Denis](#)



With thanks to the late Stephen Nemethy, whose art is featured and to Sheila Walsh who has kindly made available his collection of unique illustrations. Used with permission by the Catholic National Shrine of Our Lady.

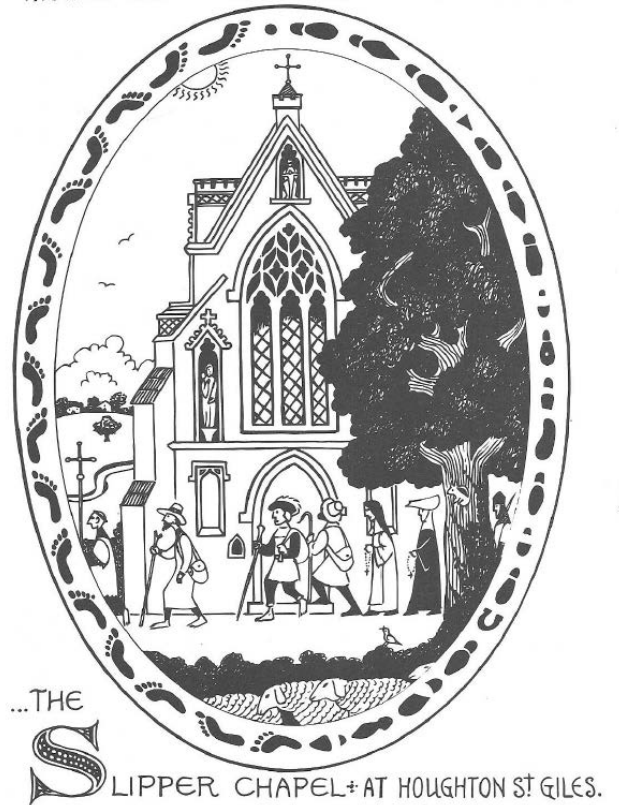
---

# THE DOWRY OF MARY

THE LAST MILE OF THE PILGRIM'S JOURNEY BEGINS AT...

## THE HISTORY PART 1

**Our Lady of** Walsingham is England's Protectress. In the olden days, one of the great titles of England was the 'Dowry of Mary'. In 1381 King Richard II in Westminster Abbey gave England as a dowry to Mary that she may protect our country. England truly belongs to Our Blessed Lady and Our Lady of Walsingham's mission is to bring the peoples of England back to Christ. The story of Walsingham comes from the great love for Our Lady of the people of England.



The story of Walsingham began in AD 1061 during the reign of St Edward the Confessor... King of England.

As the story goes, there lived in the village of Little Walsingham a pious widow known as Richeldis de Faverches. She had one son called Geoffrey and both of them gave their lives doing good works for the greater glory of God. One evening the lady Richeldis was praying and asked Our Lady what she might do to please her. Suddenly the Holy Mother appeared in a vision to her and took her in spirit to Nazareth in the Holy Land and showed her the Holy House where the archangel Gabriel appeared to her to tell her that she would be the Mother of God's Son.

Our Lady then instructed Richeldis to take down the exact measurements of the Holy House and then to build an exact replica made of wood at one of two sites. The builder set to work on the most likely site and he toiled hard all day long but by nightfall the house was unfinished...

With thanks to the late Stephen Nemethy, whose art is featured and to Sheila Walsh who has kindly made available his collection of unique illustrations. Used with permission from the Catholic National Shrine of Our Lady.

# THE DOWRY OF MARY

## THE HISTORY PART 2

Richeldis spent the night in prayer pleading with Our Lady to help!

As the morning was breaking, Richeldis and the builder arrived on site only to find that the unfinished wooden house was finished! And what's more, it had been moved quite a few meters further away from the two wells!! Well well!

Richeldis, delighted in the wonders of God's handiwork proceeded to give the builder the rest of the day off. And off he went to spread the news far and wide. As for Richeldis, well who could even begin to describe the rest of her day!

Soon, curious people along with serious pilgrims blazed a trail to Walsingham from the four corners of England and throughout Christendom. Walsingham soon became known as England's Nazareth.

Walsingham is England's Nazareth because Our Lady asked Richeldis to build a Holy House in honour of the first of her JOYS – the Annunciation – that she would become the Mother of God's Son.

As Mary said YES to God, so are we called to do the will of God in our lives. Let us pray with Mary – Let it be done to me according to God's Word. Amen



Poster by Andy Lewis  
created for schools

---

# THE HOLY HOUSE

**As a special grace for Our Lady's Dowry Tour, a 'Holy House' is built in each Cathedral in which Our Lady and her Divine Child are honoured like they were in Walsingham of old. There is something about the simplicity of this Holy House which draws people into deep prayer.**

Just to kneel before the Blessed Mother and her beloved Son, Jesus, is to experience their peace, help and consolation. It is a great privilege to have the statue of Our Lady of Walsingham from the Slipper Chapel. For this statue is the most miraculous and renowned in the whole of England.

1. Spend some time here praying for all your needs, for your family, for our country and for all the nations of the world.
2. Write a petition (a special short letter) telling Jesus and Our Blessed Mother your special needs and requests and place them in the Petition Box next to her shrine in the Holy House.
3. Spend a time in silence gazing at Jesus and Mary and ask them to fill your mind and heart with peace.
4. Our Blessed Mother, Our Lady of Walsingham, has come to visit you personally and to draw you closer to Jesus. Will you give her your YES... so that she might keep you close to Jesus all your life?
5. Thank Jesus and Mary and for all the good things in your life and name them in the silence of your heart.
6. End by praying an Our Father, Hail Mary and a Glory Be.
7. Might you compose a short play to act out the story of Walsingham?
8. When you go home, share the story with your family and invite them to take you on a pilgrimage to Walsingham. Colour in and make beautiful the pictures which tell the story.



With thanks to the late Stephen Nemethy, whose art is featured and to Sheila Walsh who has kindly made available his collection of unique illustrations. Used with permission from the Catholic National Shrine of Our Lady.

---

# PRAYER AND WORSHIP

## 10 SIMPLE AND EFFECTIVE IDEAS FOR PUPIL-LED PRAYER AND WORSHIP

- Ask Our Lady to intercede for you and others each day by saying 'Our Lady of Walsingham... Pray for us'. Find out other titles of Our Lady also (such as Our Lady, Seat of Wisdom... Mother of Sorrows... ..)
- Say the 'Hail Mary' slowly together, thinking of each word/phrase and Mary's 'yes'. Reflecting on how you too can respond to God's call each day and help to lead others to Christ as she does, especially those in need.
- Visit a quiet place in your home or school. Talk to Mary in your heart, telling her about your day, your hopes and dreams, and your difficulties.
- Learn a Marian hymn, compose a song (or write another verse of a well-known hymn) based on the Annunciation, Mary or the Re-dedication. Sing this as part of your Act of Worship ('Singing is praying twice').
- Lead others in saying the Rosary (especially the Joyful and Sorrowful mysteries) and invite others to be like Our Lady and to 'ponder and treasure' the mystery of her Son's life.
- Pray for the law-makers in the country and all the political leaders in the UK (especially on 18th March when the statue of Our Lady of Walsingham will go to Parliament for Mass and the Rosary).
- Lead an Act of Worship based on Mary and the Annunciation to celebrate the feast day on 25th March (exactly nine months before Christmas day).
- Lead others in saying 'The Act of Entrustment of England to the Virgin Mary' around the 29th March. Alternatively write your own Act of Entrustment as a class/group/school)
- Write your own prayers/liturgy asking for Our Lady's help for this country and for all of its people (including the homeless, those in prison, refugees...)
- Choose a piece of Scripture from Mary's life and reflect on it. Pray for her help in your own life..



---

# A HYMN FOR OUR LADY OF WALSINGHAM

## Dear Mother

1. Our Lady of Walsingham  
hear us we pray  
We enter your Holy House  
to meet you today.  
Ave Ave Ave Maria...
2. Your children dear Mother  
have come here to pray  
We love you dear Mother  
and want you to stay.
3. You smile on your children  
and fill us with love  
You are our dear Mother  
from Heaven above.
4. You promised to help us  
in all our great needs,  
We bring you our troubles  
our tears and our woes.
5. We give you our hearts  
and our homes and our love,  
Please take them to Jesus  
and Joseph with love.
6. Oh bless us, dear lady  
with blessings from Heaven  
And to our petitions,  
let answer be given.

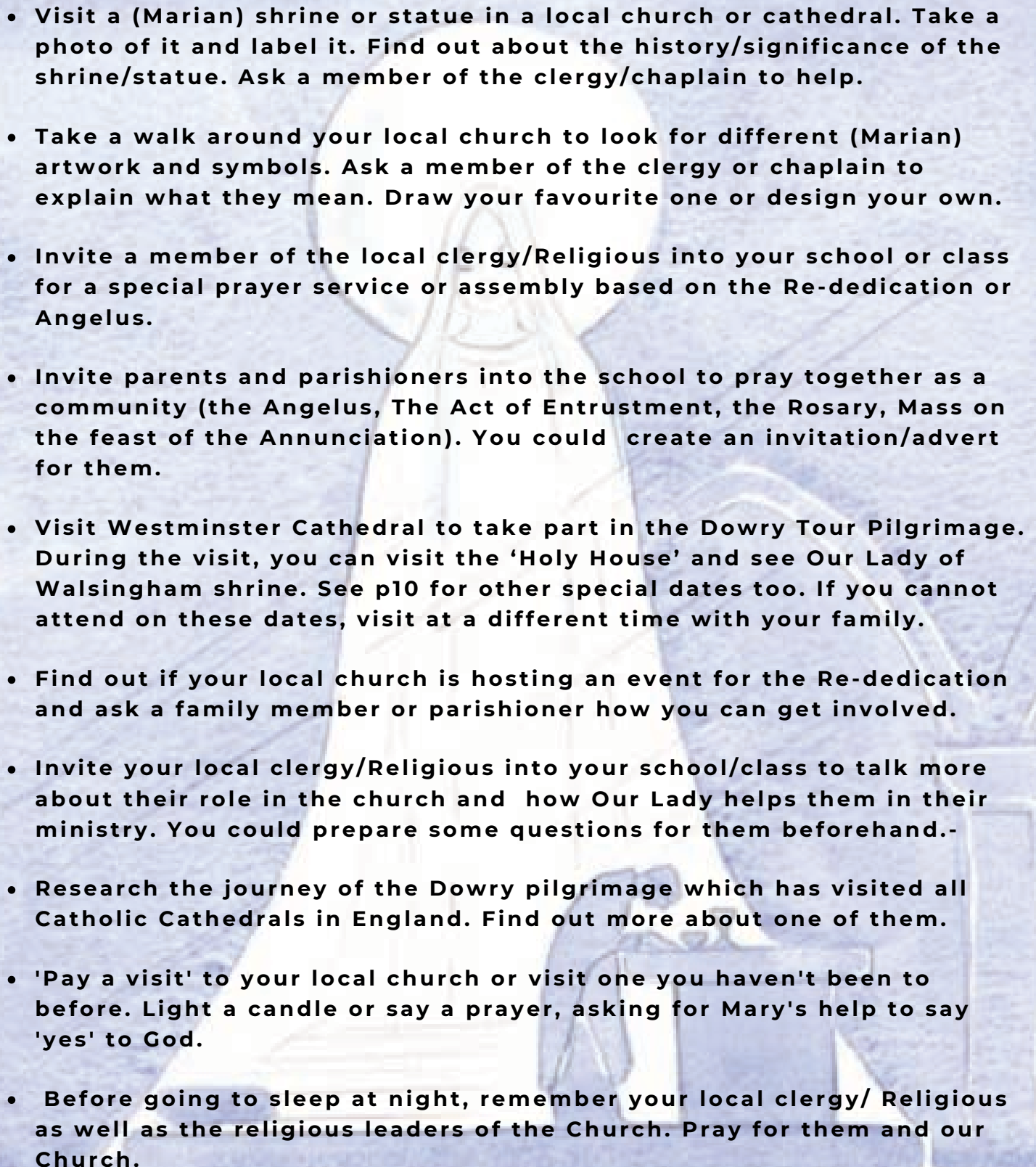


With thanks to the late Stephen Nemethy, whose art is featured and to Sheila Walsh who has kindly made available his collection of unique illustrations. Used with permission from the Catholic National Shrine of Our Lady.

---

# LOCAL/NATIONAL CHURCH

## 10 SIMPLE WAYS TO DEVELOP LINKS WITH THE CHURCH

- 
- Visit a (Marian) shrine or statue in a local church or cathedral. Take a photo of it and label it. Find out about the history/significance of the shrine/statue. Ask a member of the clergy/chaplain to help.
  - Take a walk around your local church to look for different (Marian) artwork and symbols. Ask a member of the clergy or chaplain to explain what they mean. Draw your favourite one or design your own.
  - Invite a member of the local clergy/Religious into your school or class for a special prayer service or assembly based on the Re-dedication or Angelus.
  - Invite parents and parishioners into the school to pray together as a community (the Angelus, The Act of Entrustment, the Rosary, Mass on the feast of the Annunciation). You could create an invitation/advert for them.
  - Visit Westminster Cathedral to take part in the Dowry Tour Pilgrimage. During the visit, you can visit the 'Holy House' and see Our Lady of Walsingham shrine. See p10 for other special dates too. If you cannot attend on these dates, visit at a different time with your family.
  - Find out if your local church is hosting an event for the Re-dedication and ask a family member or parishioner how you can get involved.
  - Invite your local clergy/Religious into your school/class to talk more about their role in the church and how Our Lady helps them in their ministry. You could prepare some questions for them beforehand.-
  - Research the journey of the Dowry pilgrimage which has visited all Catholic Cathedrals in England. Find out more about one of them.
  - 'Pay a visit' to your local church or visit one you haven't been to before. Light a candle or say a prayer, asking for Mary's help to say 'yes' to God.
  - Before going to sleep at night, remember your local clergy/ Religious as well as the religious leaders of the Church. Pray for them and our Church.

---

# CREATIVE HOME-SCHOOL LINKS

## 15 CREATIVE IDEAS FOR LESSONS OR HOMEWORK TASKS



1. Research Marian shrines and select your favourite (see useful links) Explain why.
2. Write a Marian poem (such as a Haiku or a kenning).
3. Create a 2/3-D piece of artwork based on the Re-dedication/Dowry of Mary.
4. Design a Marian shrine for the school. Include a quiet area for prayer.
5. Create a simple book(let) for the younger pupils to explain the story of Our Lady of Walsingham and the Holy House.
6. Create a game or quiz based on Our Lady.
7. Research the history of Our Lady of Walsingham and create a picture book or cartoon strip to illustrate this.
8. Create a liturgical dance based on a Marian song/hymn.
9. Visit the Lady Chapel or the shrine of Our Lady of Walsingham at Westminster Cathedral as a family and take a photo/make an illustration of your favourite part.
10. Write a contribution for the school newsletter to explain to parents/governors what the school is doing/has done for the Re-dedication and the impact this has had on the school or individuals.
11. Create a Dowry of Mary collage or memory book.
12. Listen to the song 'Mary did you know...' by Michael English and write your own song with questions you would like to ask Mary.
13. Make a flower for Mary. On each petal write how you can be like her this week by saying 'yes' to God and doing what is good, kind and loving.
14. Find out about Mary in the Bible, especially her joys and sorrows. Create a bookmark using your favourite verse.
15. Write a letter to Mary as you would do to your mother or best friend. Then write one back to yourself from Mary. What do you think she would say to you?

---

# DOWRY PILGRIMAGE - 20/03/20



---

## EVENT IN WESTMINSTER CATHEDRAL

## ESTIMATED TIME

### MASS (OPTIONAL)

12:30PM-1:05PM

---

### TALK ON THE DOWRY OF MARY/RE-DEDICATION

1:05PM-1:30PM

---


### TIME TO VISIT THE HOLY HOUSE, PRAY AND QUIZ

1:30PM-3:30PM

**Schools are invited to come for as much or as little time as they would like in the afternoon anytime between 12:30-3:30pm. All are welcome.**

---

# OFFICIAL RESOURCES - BEHOLD



Visit the website  
for:

- The Angelus Promise
- The Act of Entrustment
- Timeline of events
- Details of how to take part
- Paintings and images
- Videos, Blogs, Twitter Feeds
- History of Walsingham
- Details of national shrines
- Press articles
- ... and lots more!

<https://www.behold2020.com/>

---

# USEFUL LINKS

## WEBSITE AND BRIEF DESCRIPTION

### THE DOWRY OF MARY AND THE RE-DEDICATION

For the official Re-dedication website

<https://www.behold2020.com/>

Useful information including Dowry Tour booklet, maps, shrines and history as well as the letter of consecration of England to Our Lady

<http://dowrytour.org.uk/dowryofmary/>



### MARY AND SCRIPTURE

For the Catholicism Unpacked Q and A document and accompanying PowerPoint

<https://education.rcdow.org.uk/re-catholic-life/catholic-life/>

For LOTS of Scripture on Mary and Information about this

<https://udayton.edu/imri/mary/s/scripture-on-the-life-of-mary.php>

For Scripture passages including Mary

[http://www.awakentoprayer.org/bible\\_passages\\_on\\_mary.htm](http://www.awakentoprayer.org/bible_passages_on_mary.htm)

### THE ANGELUS

The Angelus Prayer for children – practical support for teaching and use

<https://www.thereligionteacher.com/angelus-prayer-for-children/>

A mini-book on the Angelus with the prayer, glossary, history and prayerful activity

<https://www.looktohimandberadiant.com/2013/09/angelus-mini-book.html>

Support for teachers on the Angelus and activities

<https://www.catholicculture.org/culture/liturgicalyear/activities/view.cfm?id=640>

For a beautiful and simple child and printer-friendly version of the Angelus and links to other Marian prayers and Act of Consecration to Our Lady

<https://www.loyolapress.com/our-catholic-faith/prayer/traditional-catholic-prayers/prayers-honoring-mary/the-angelus-prayer>

For the Angelus and other Marian prayer

<https://teachingcatholickids.com/catholic-prayers/>

For a history and artwork for reflection on the Angelus

<http://www.catholicdigest.com/faith/prayer/praying-the-angelus>

# PREPARATION FOR CONSECRATION To Jesus THROUGH MARY

